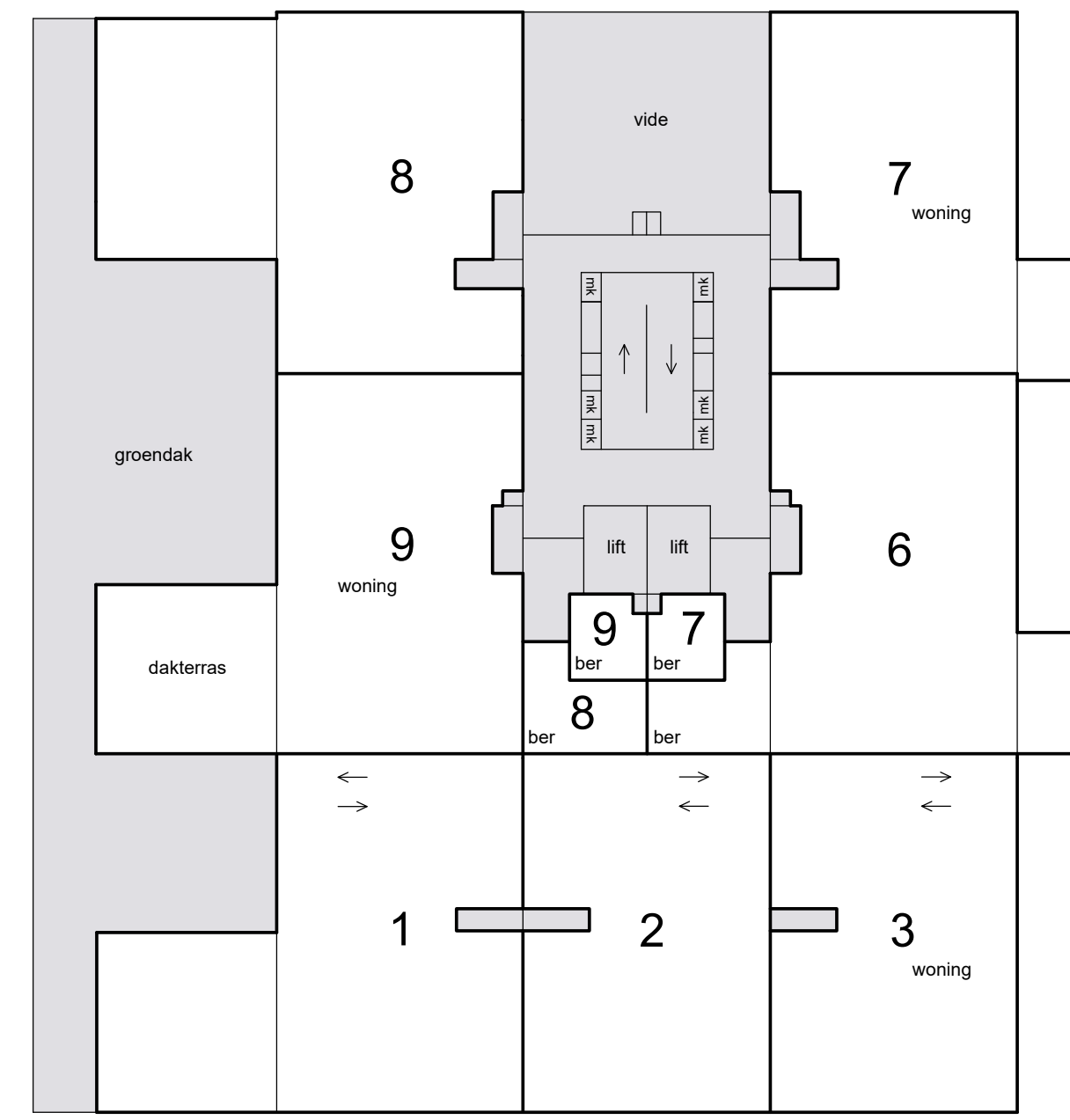
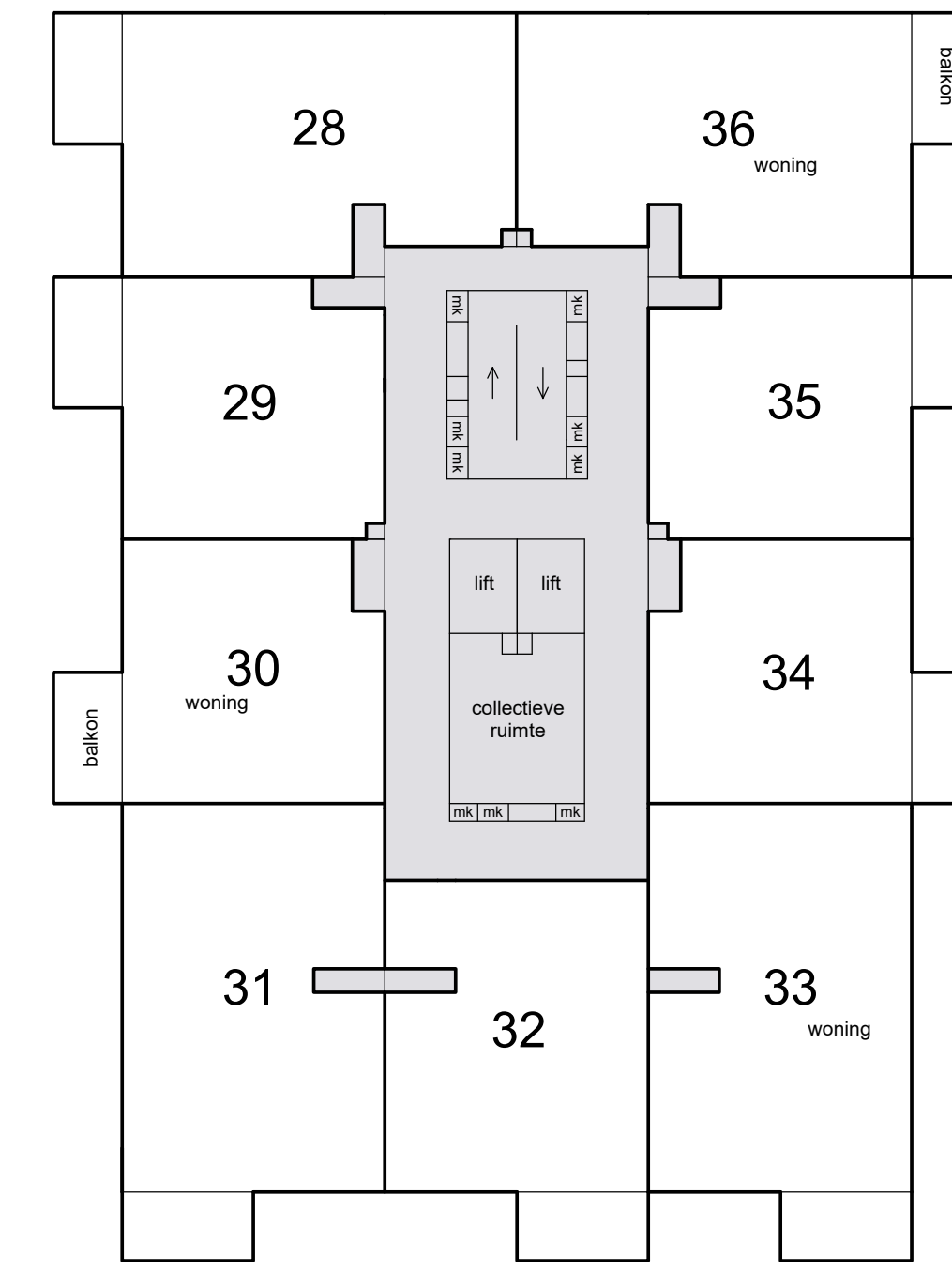


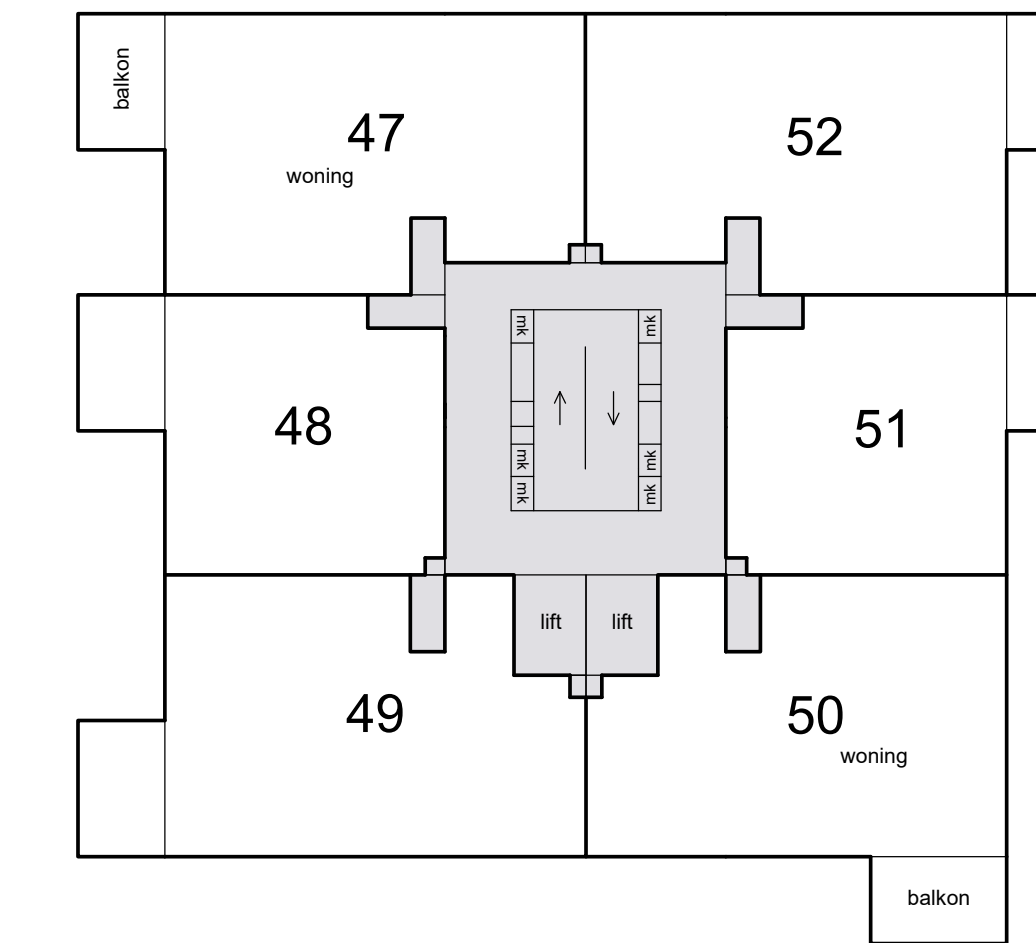
Schaal 1 : 200
 = Gemeenschappelijk
 Tekening bestaat uit 3 bladen
 Blad 1



1e etage

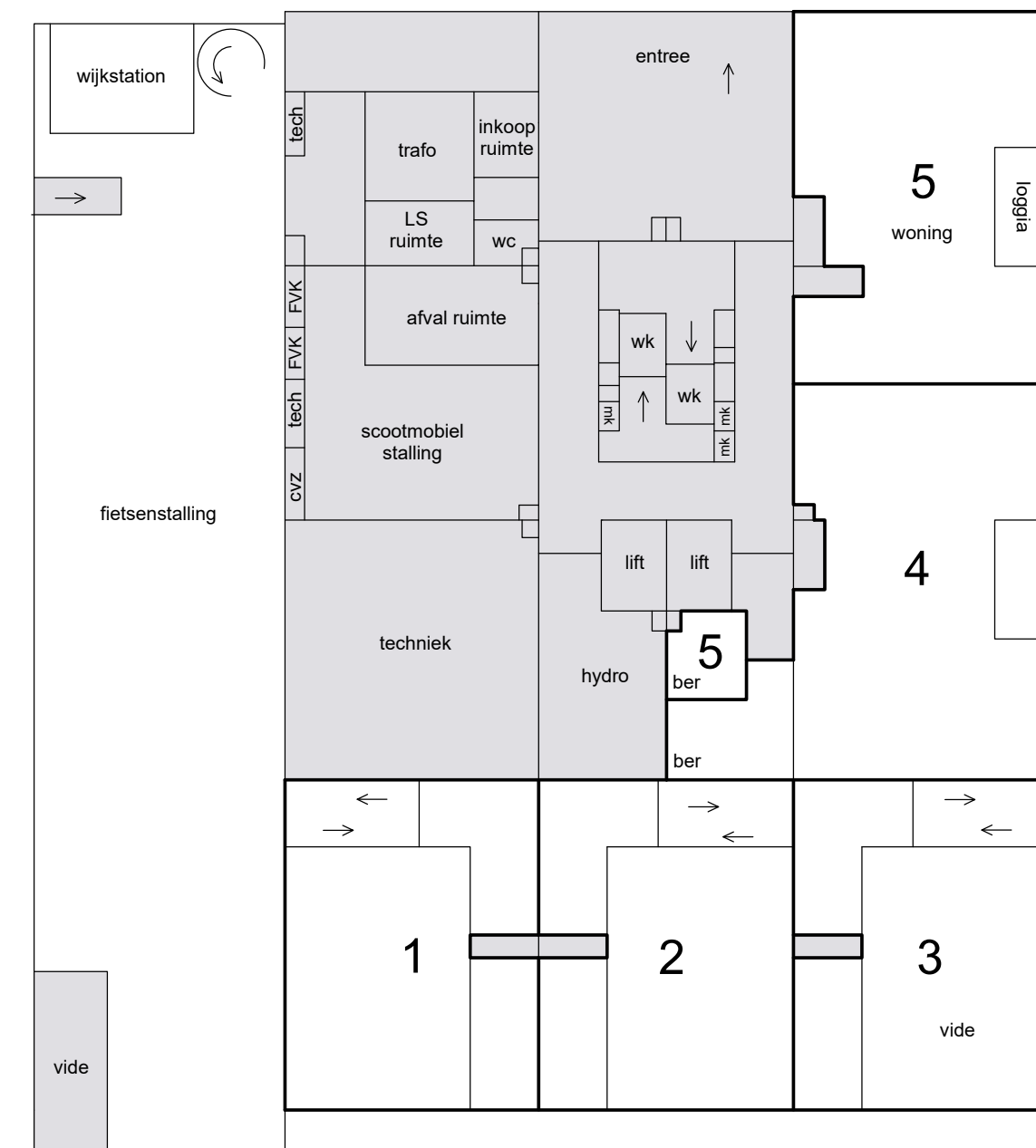


4e etage

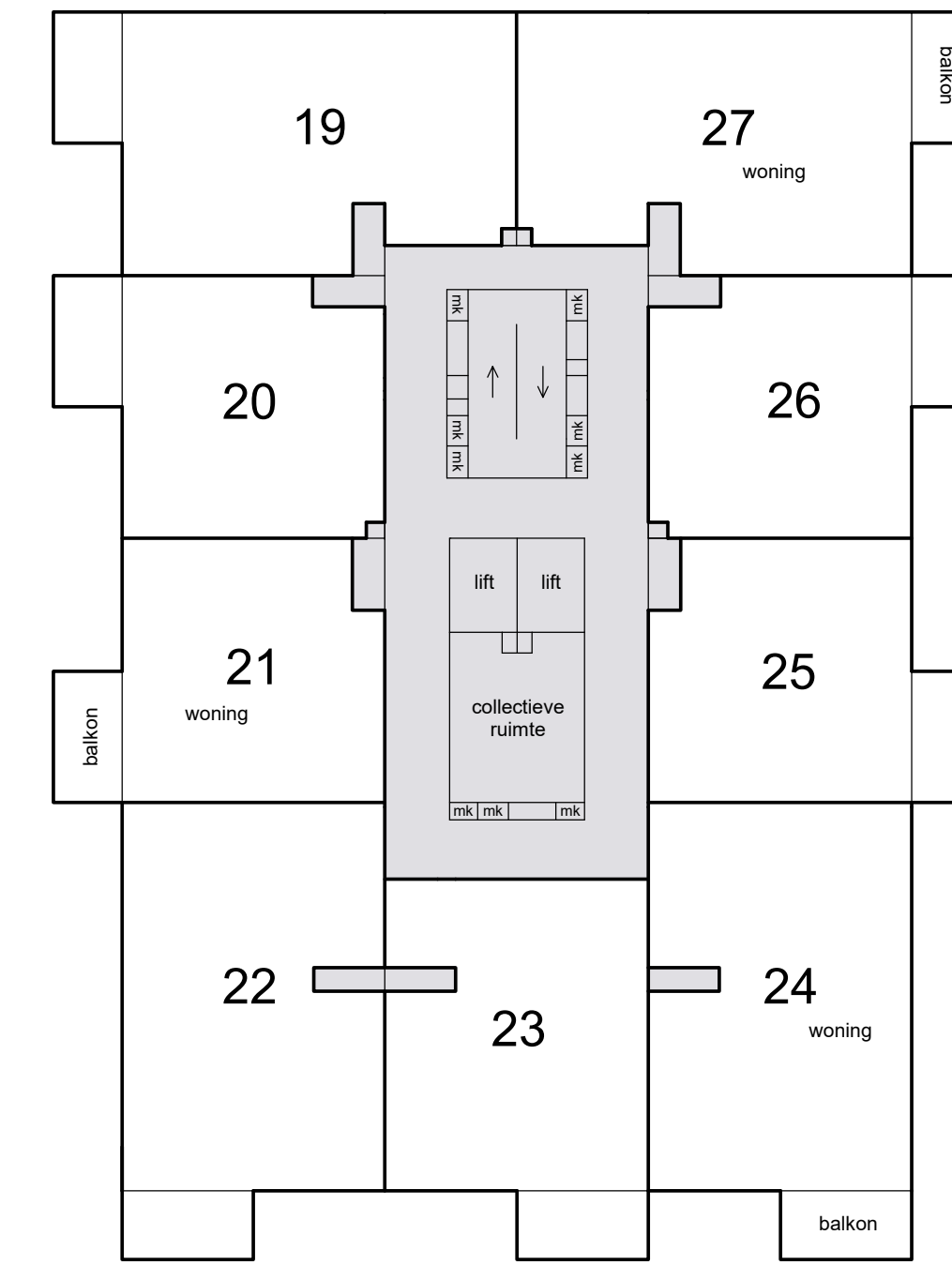


7e etage

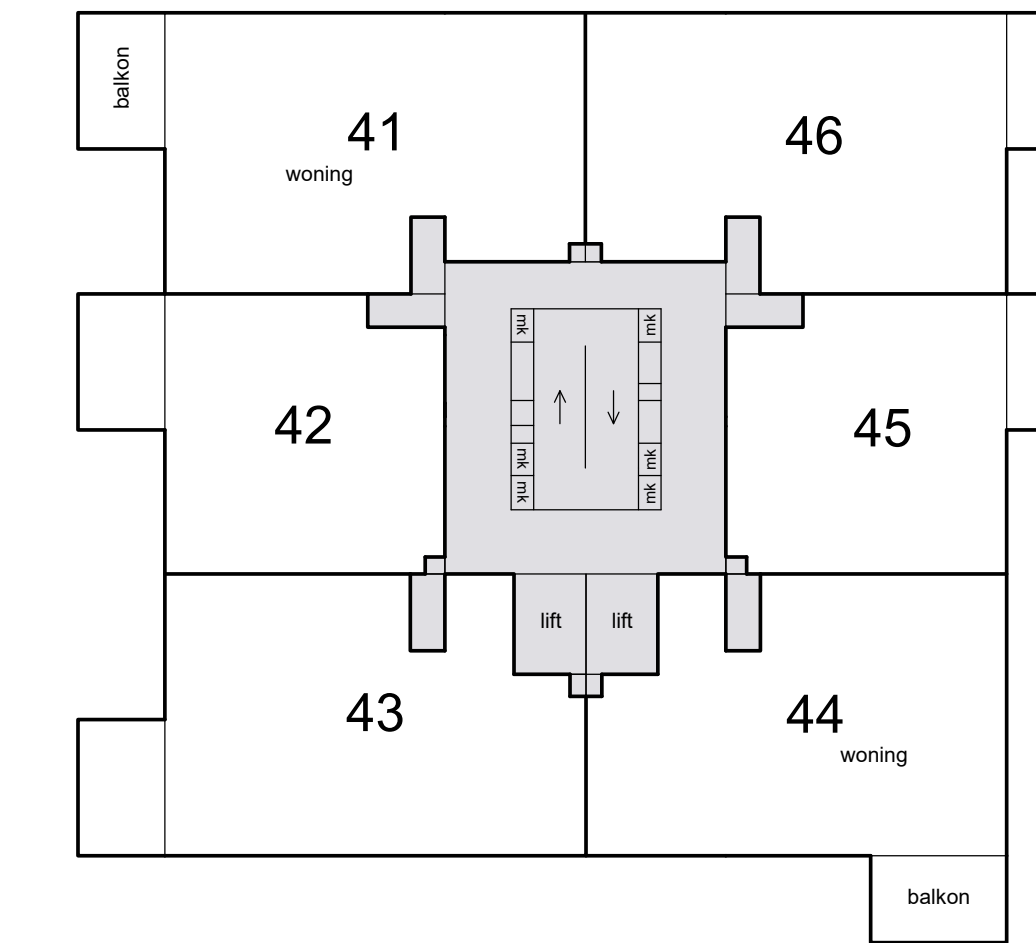
De mogelijkheid bestaat dat bij een aantal appartementen één of twee extra balkons worden geplaatst.



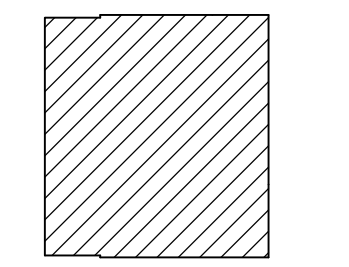
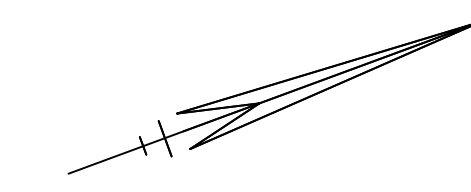
begane grond



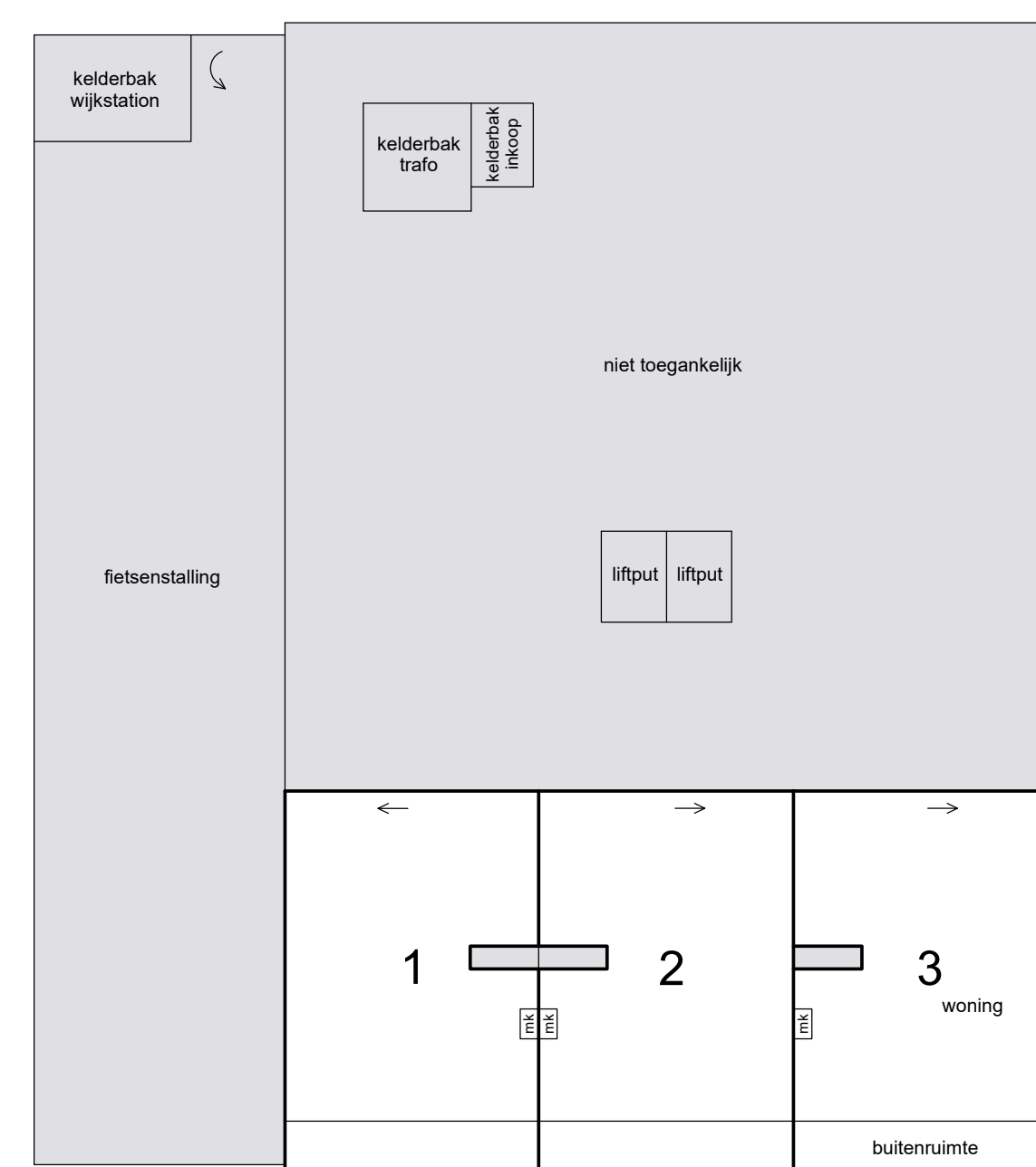
3e etage



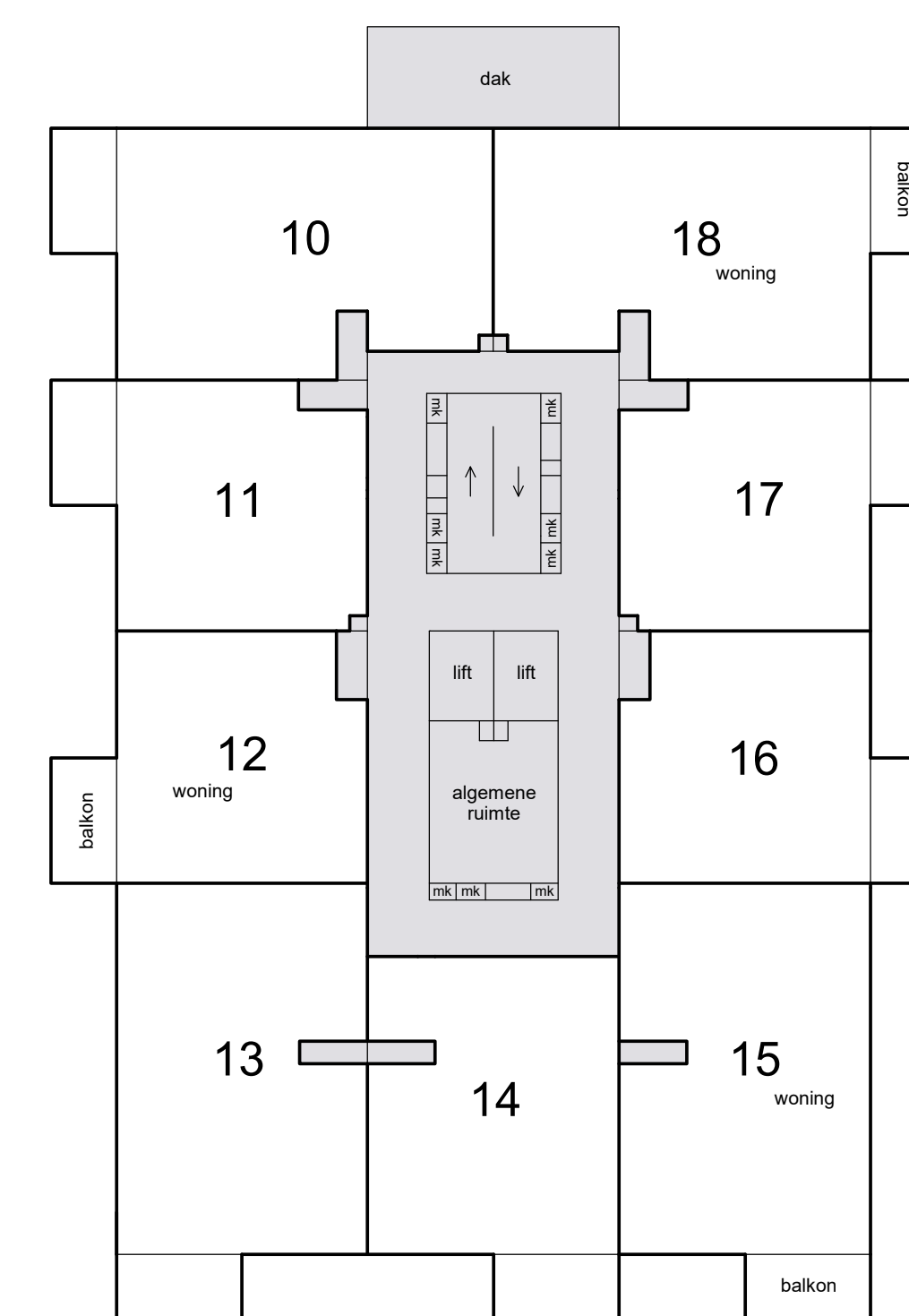
6e etage



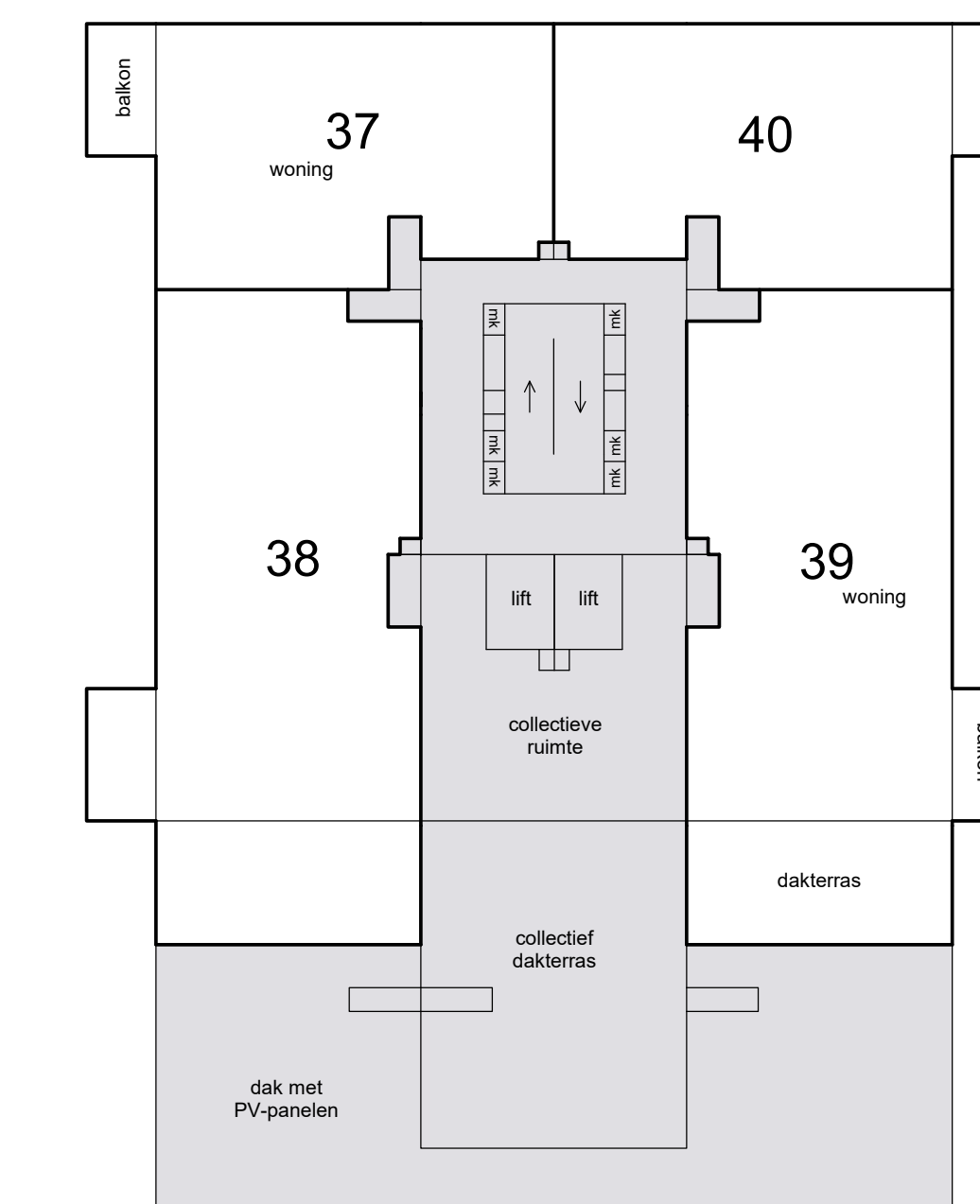
Situatie 1 : 1000 's-Gravenhage AC



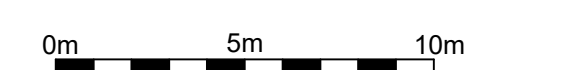
kadeniveau



2e etage

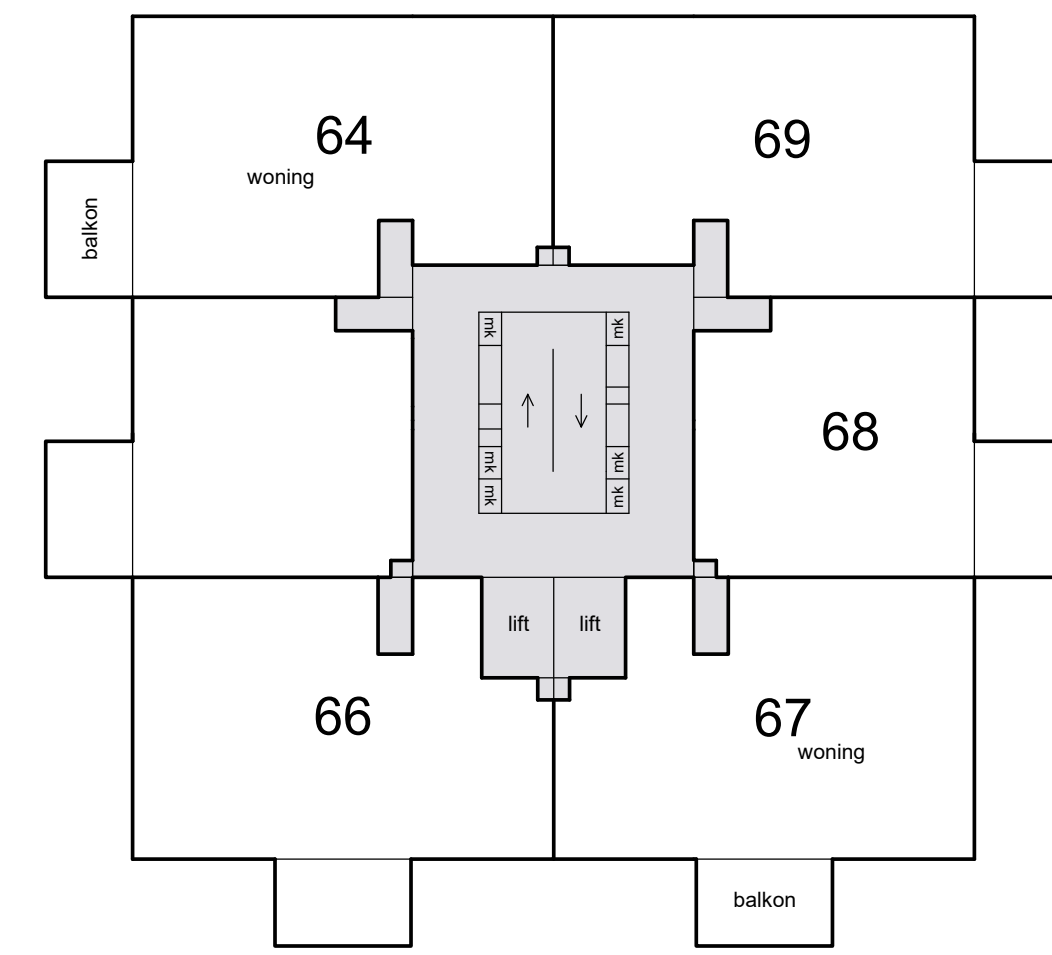
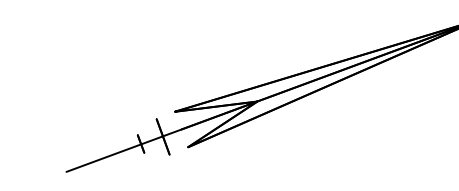


5e etage

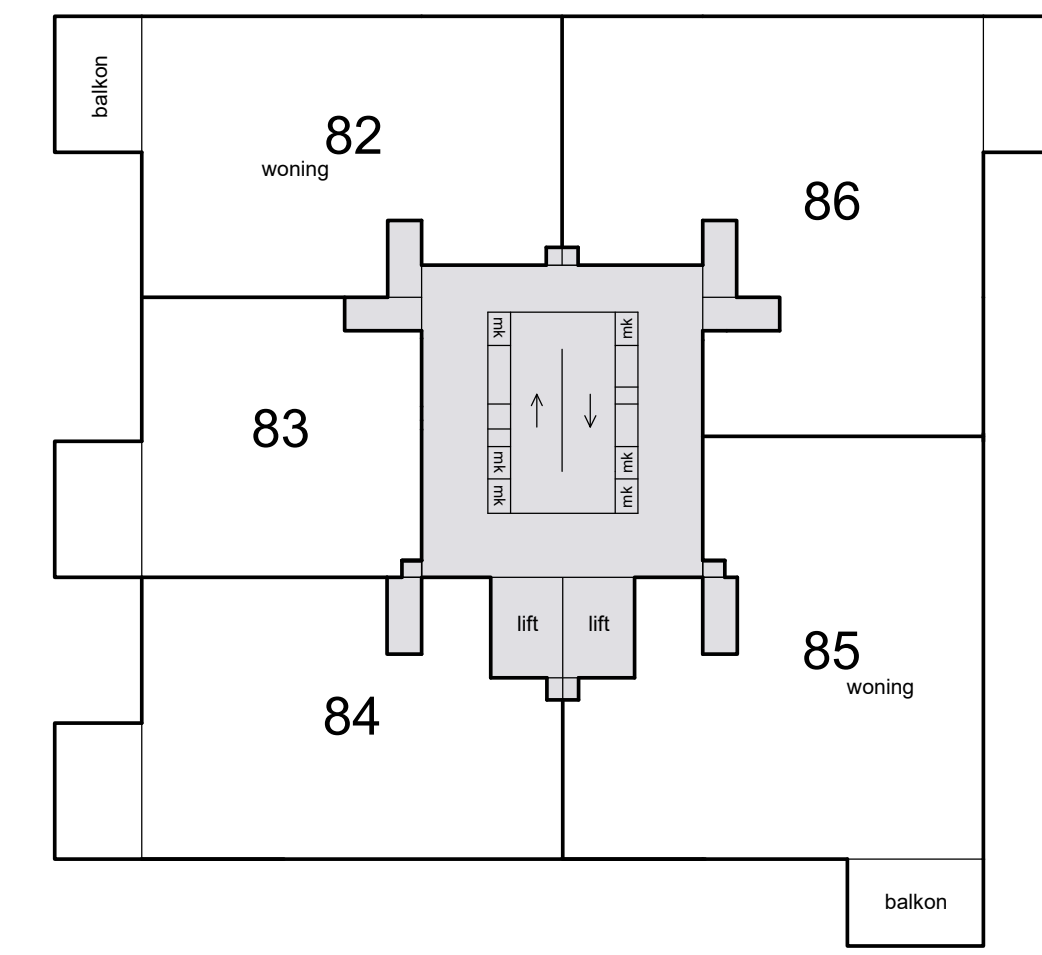


Schaal 1 : 200
■ = Gemeenschappelijk
Tekening bestaat uit 3 bladen
Blad 2

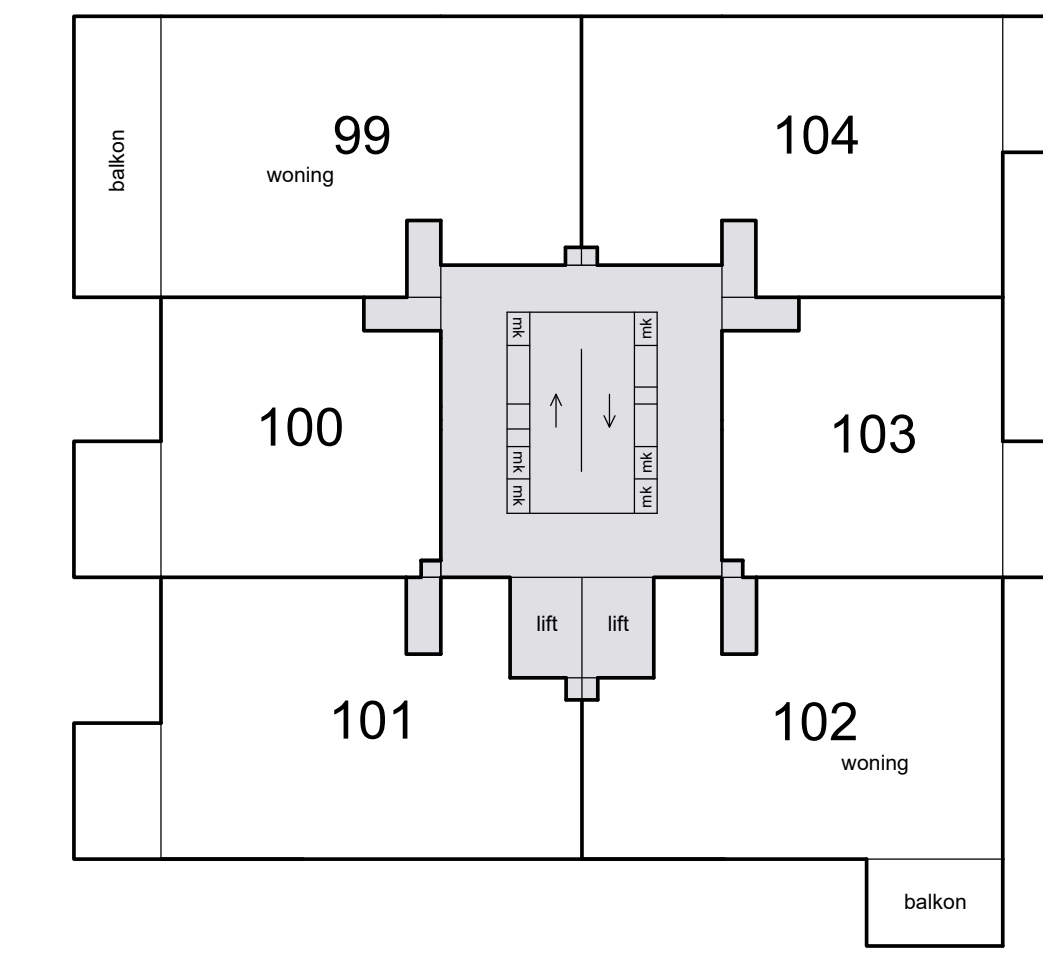
De mogelijkheid bestaat dat bij een aantal appartementen
één of twee extra balkons worden geplaatst.



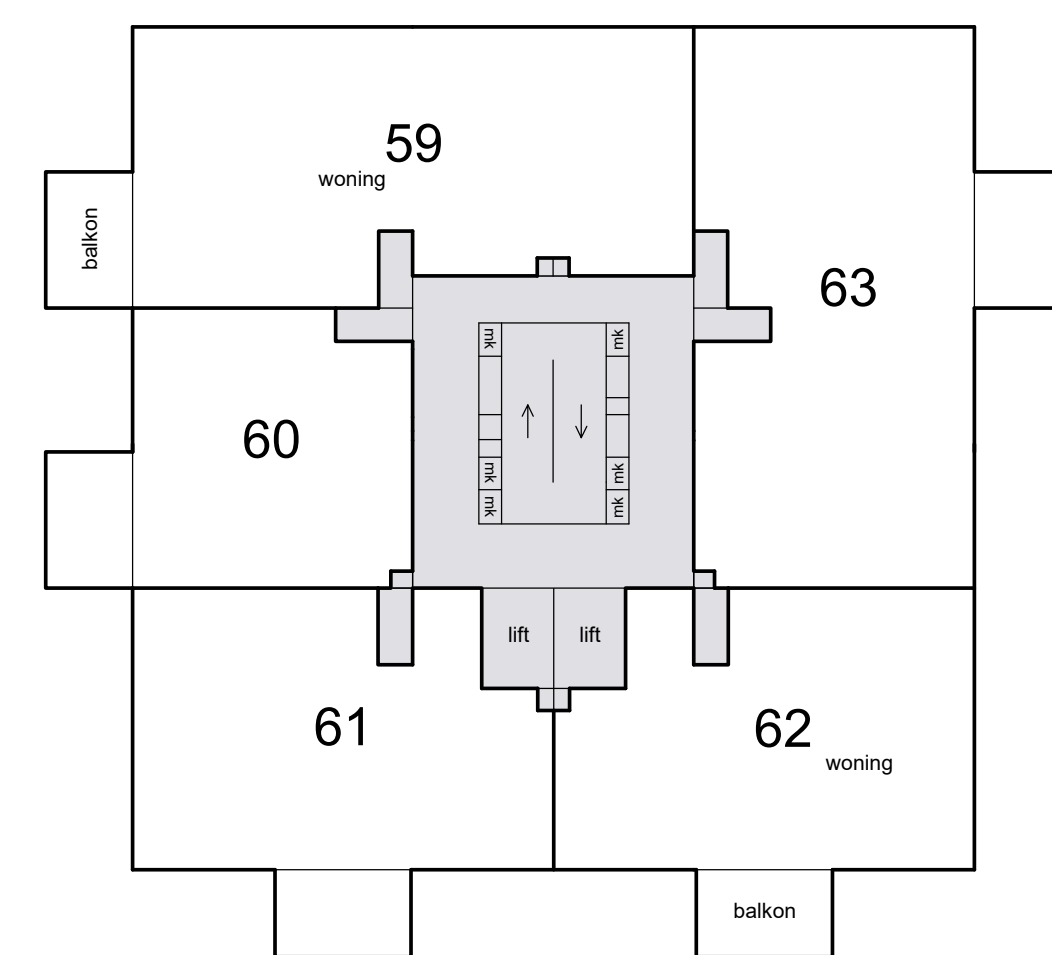
10e etage



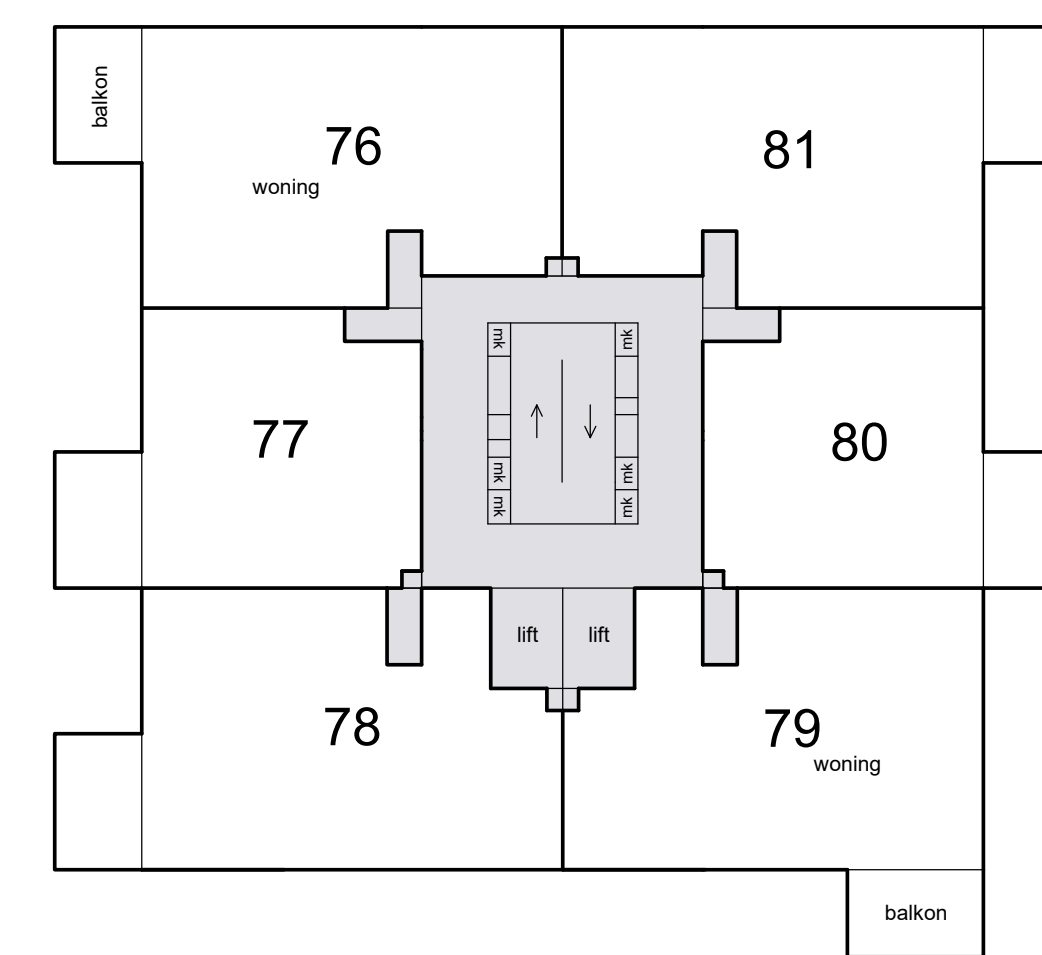
13e etage



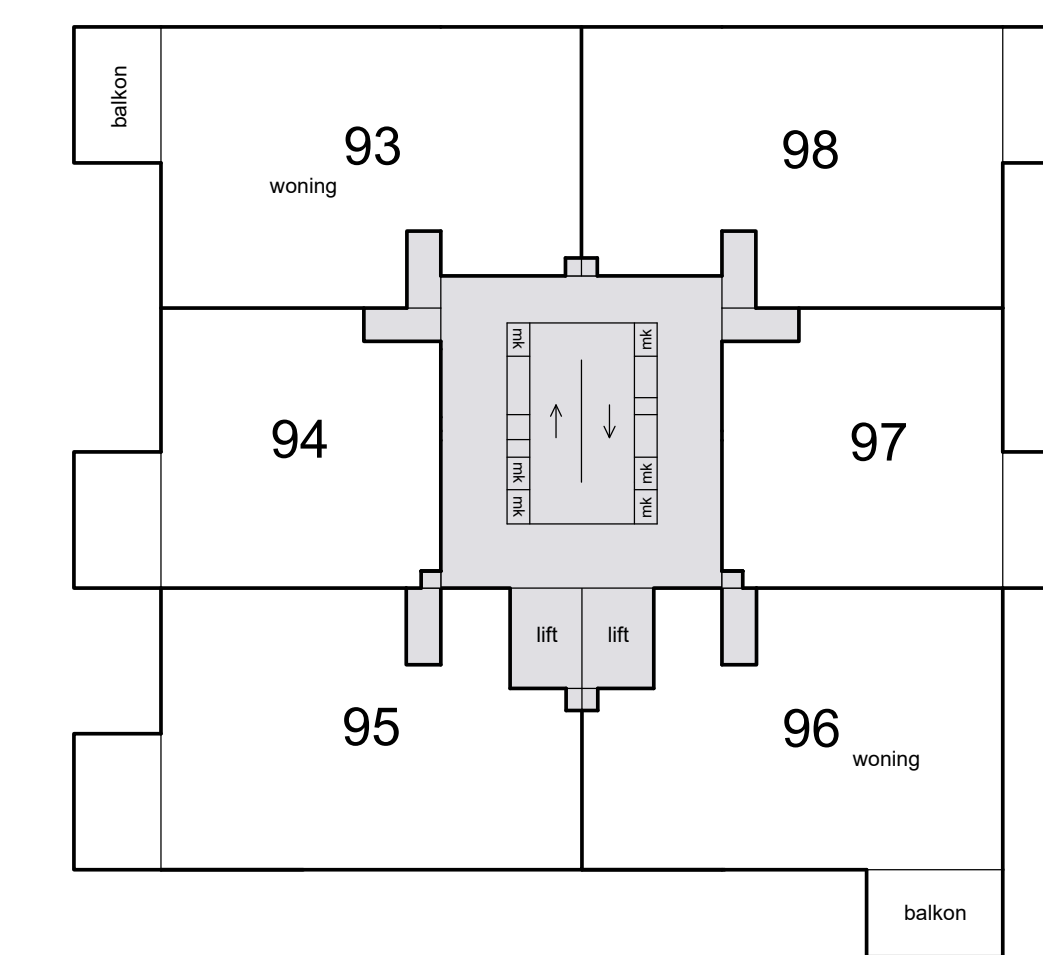
16e etage



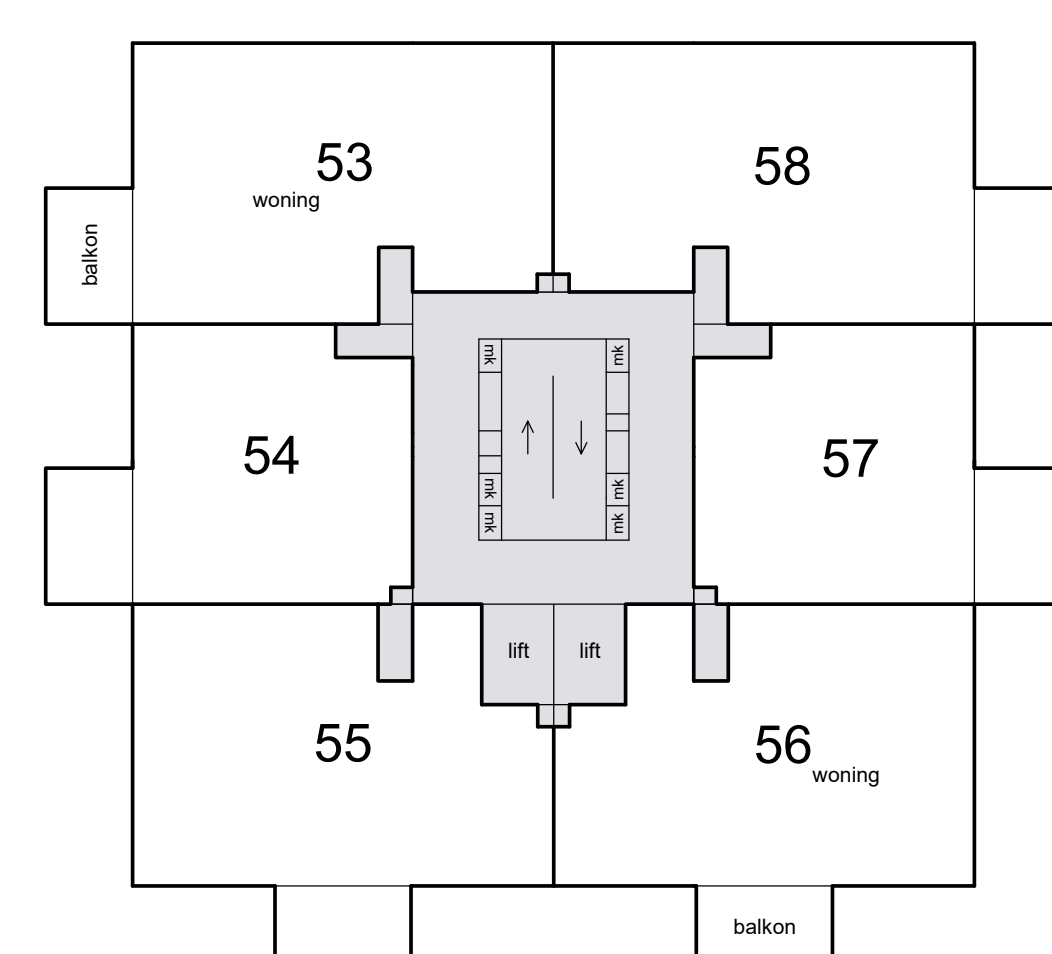
9e etage



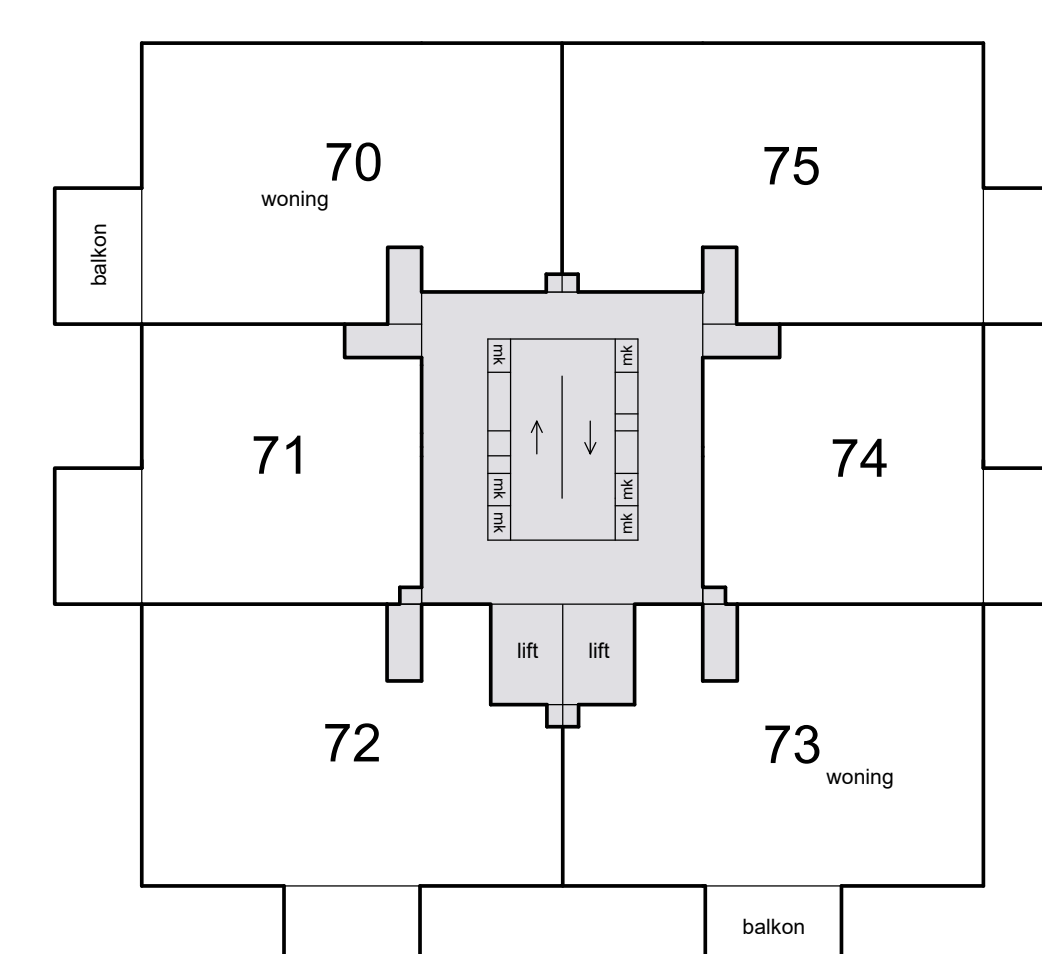
12e etage



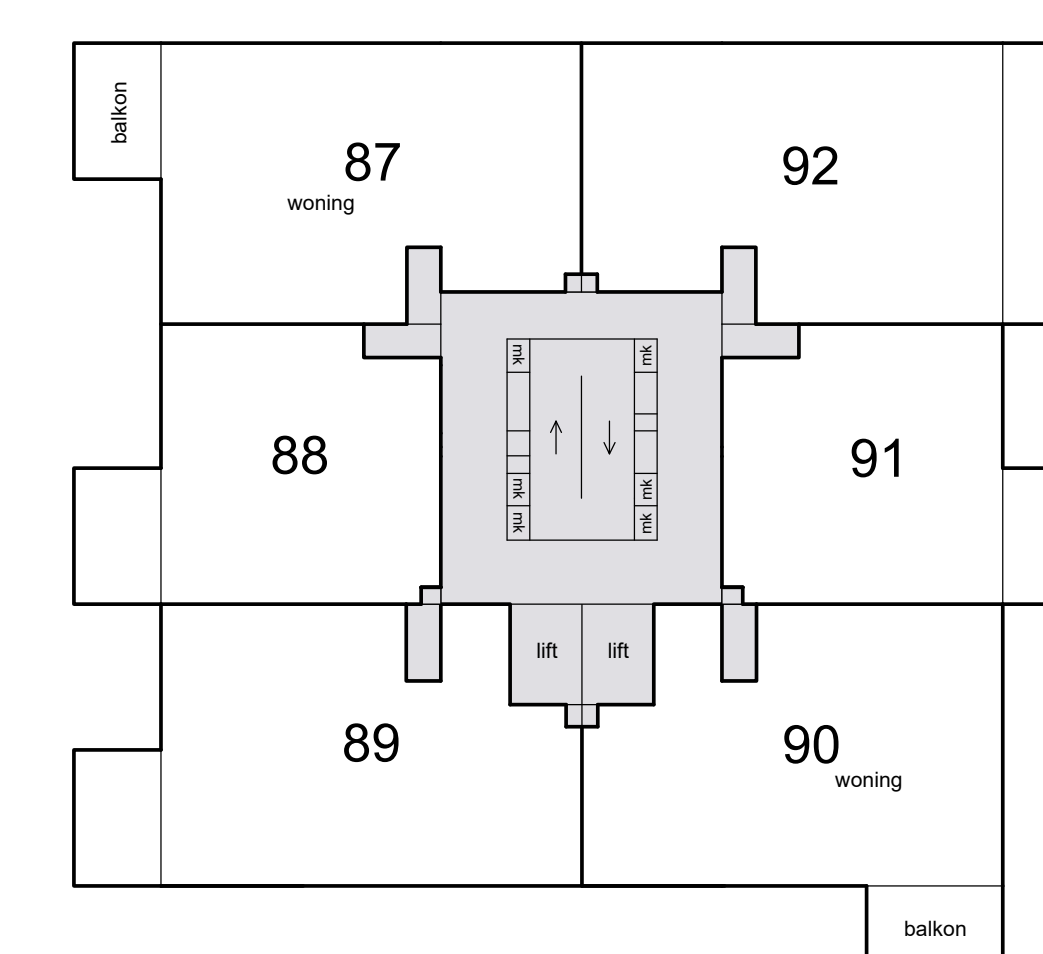
15e etage



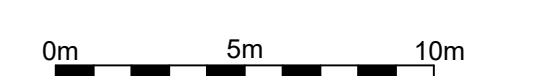
8e etage



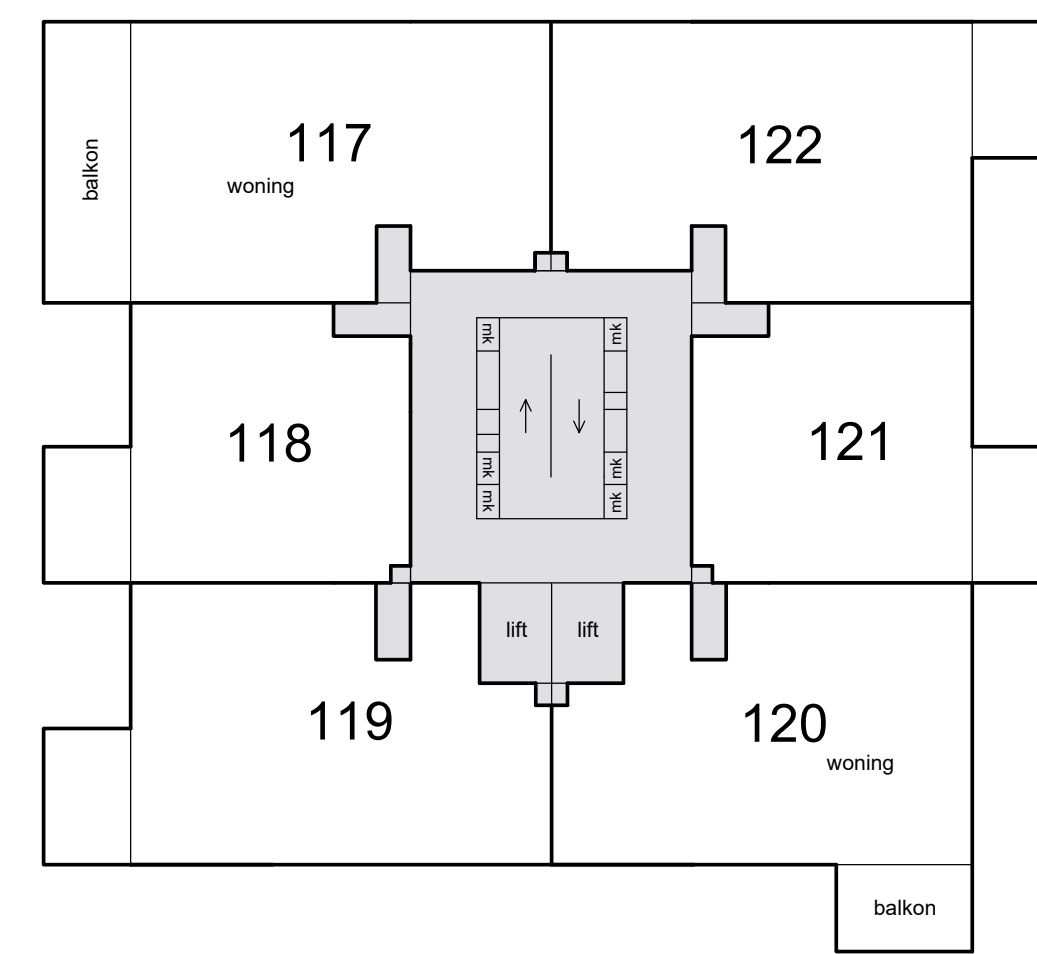
11e etage



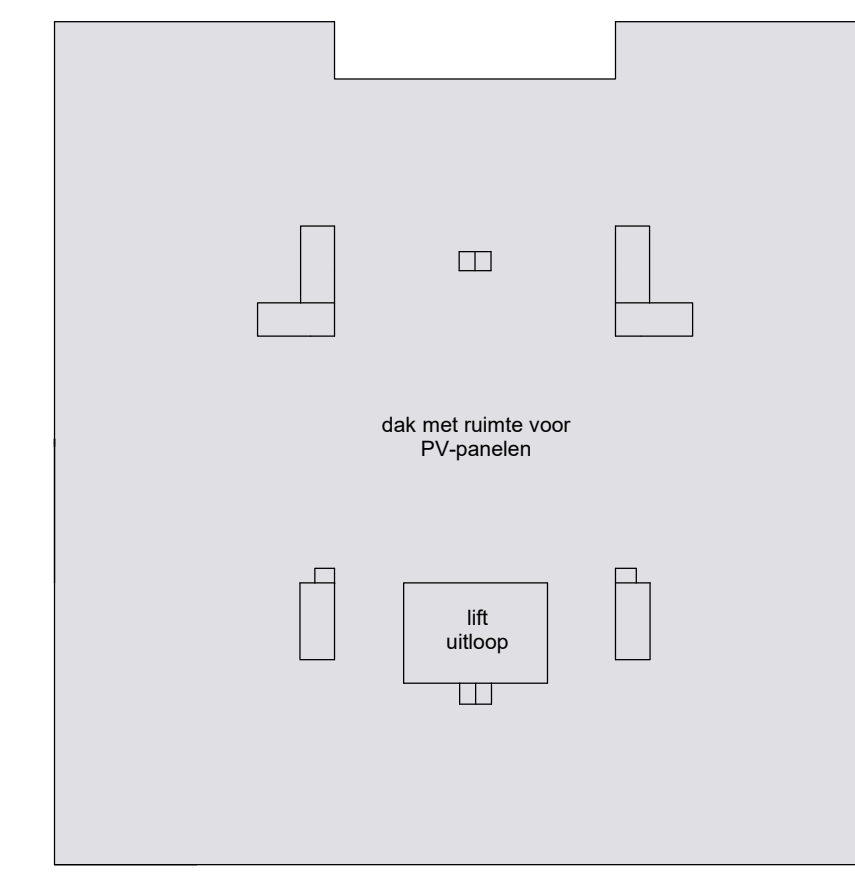
14e etage



Schaal 1 : 200
■ = Gemeenschappelijk
Tekening bestaat uit 3 bladen
Blad 3

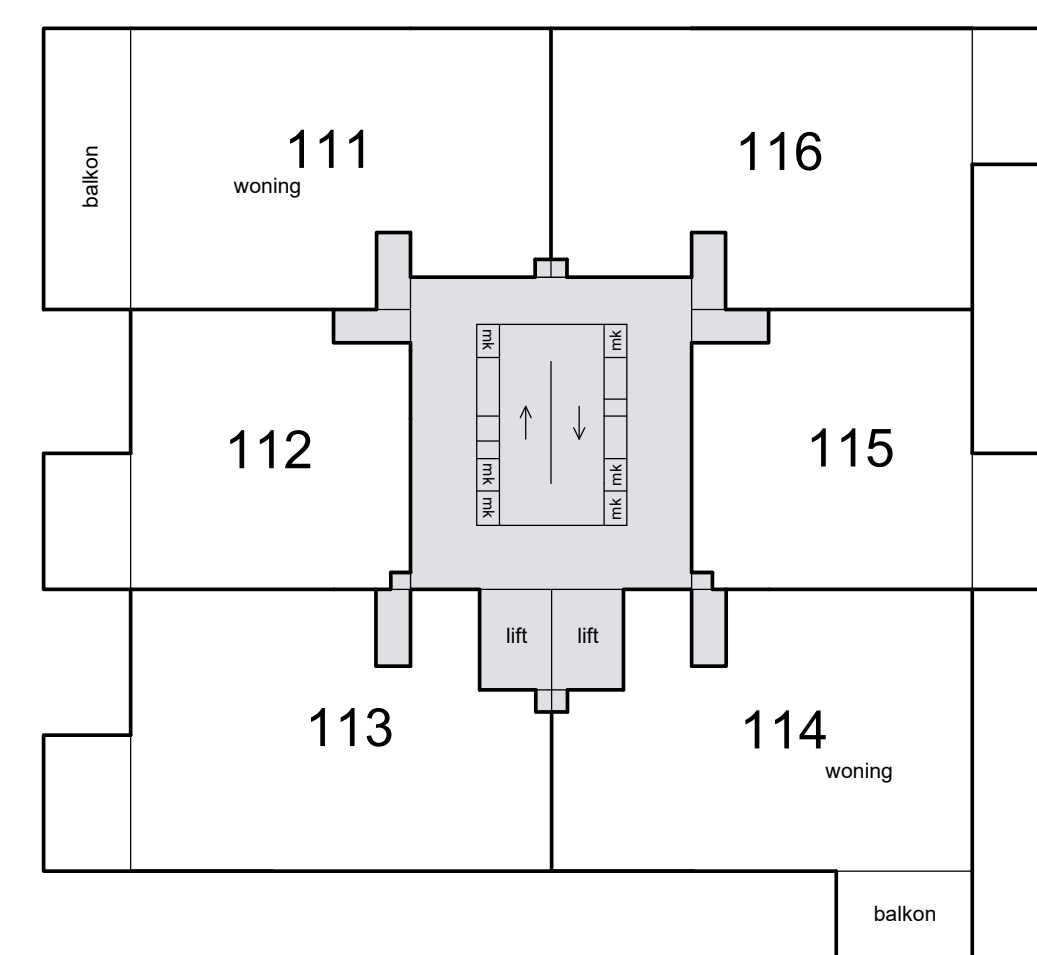
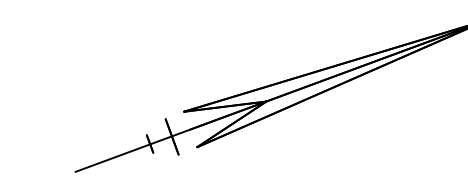


19e etage

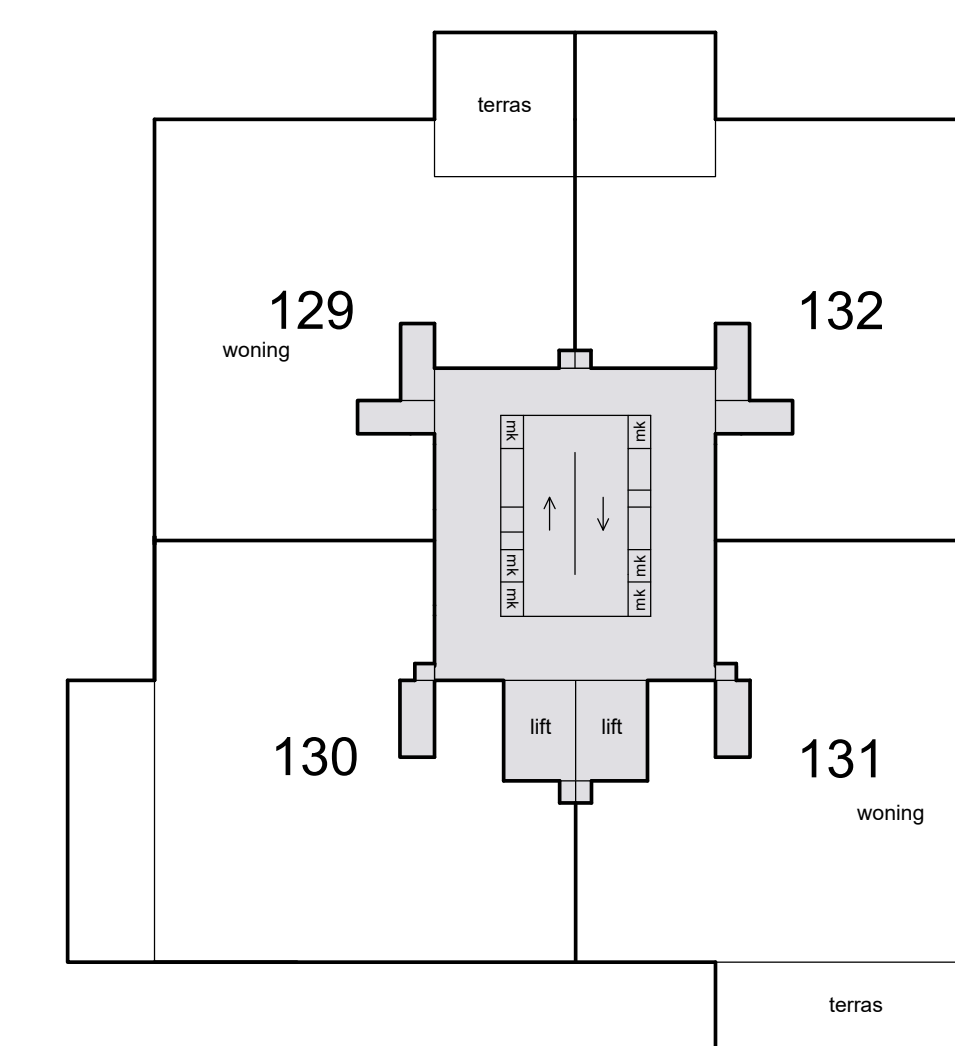


dak

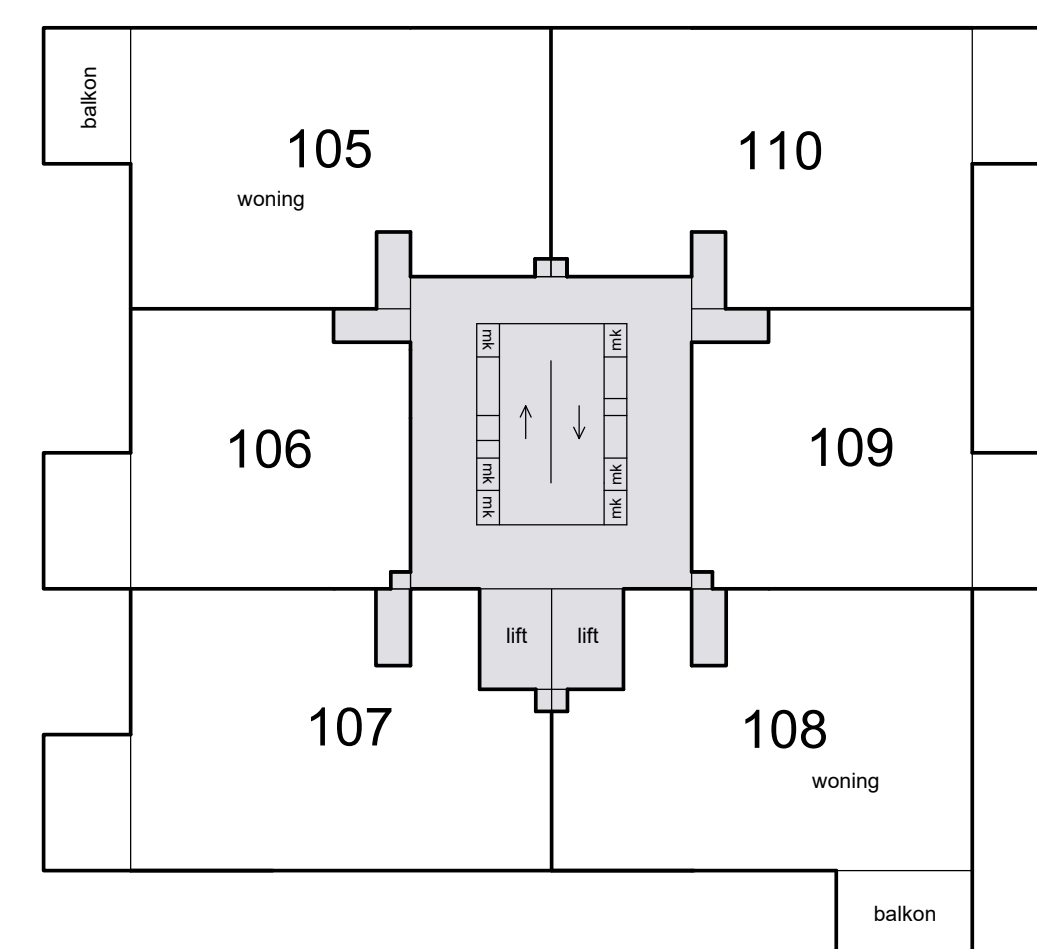
De mogelijkheid bestaat dat bij een aantal appartementen
één of twee extra balkons worden geplaatst.



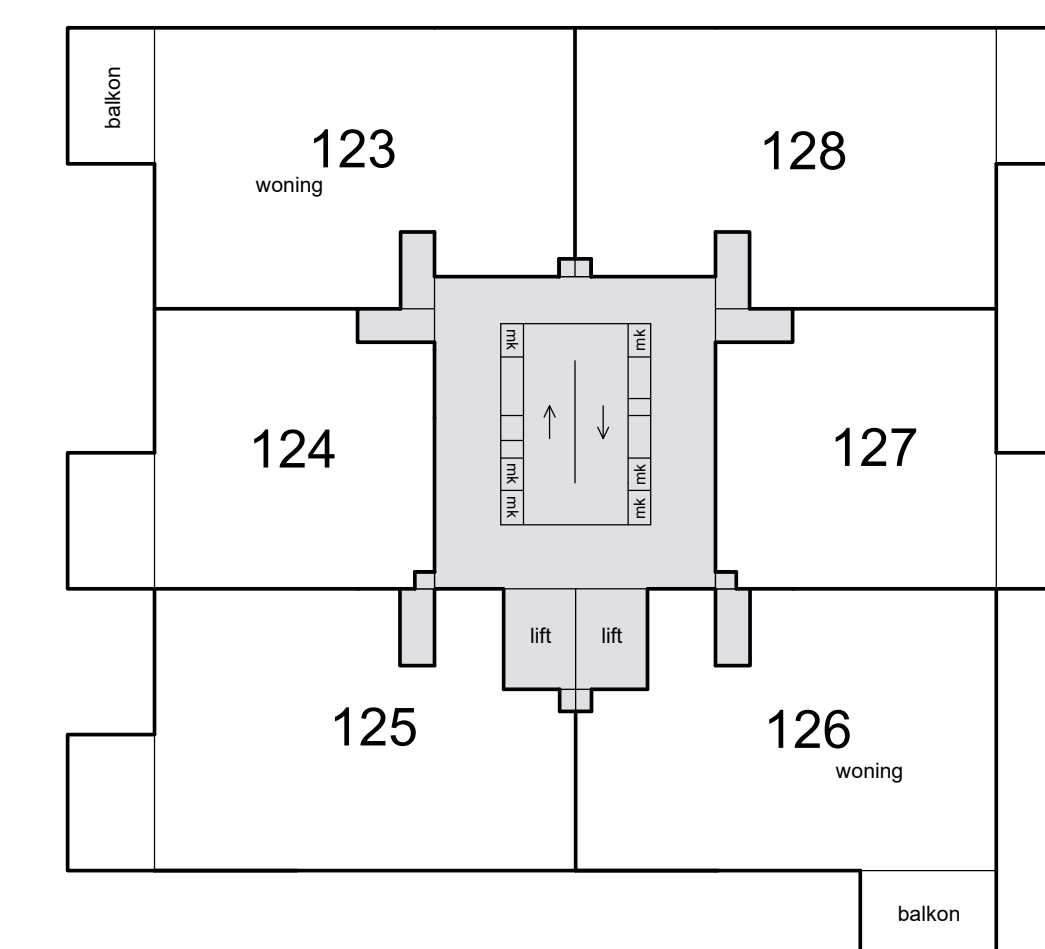
18e etage



21e etage



17e etage



20e etage

